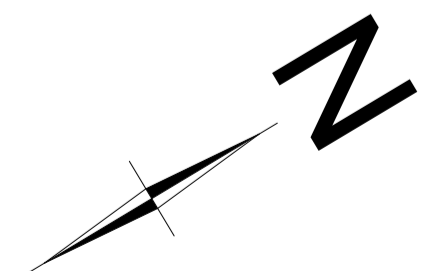
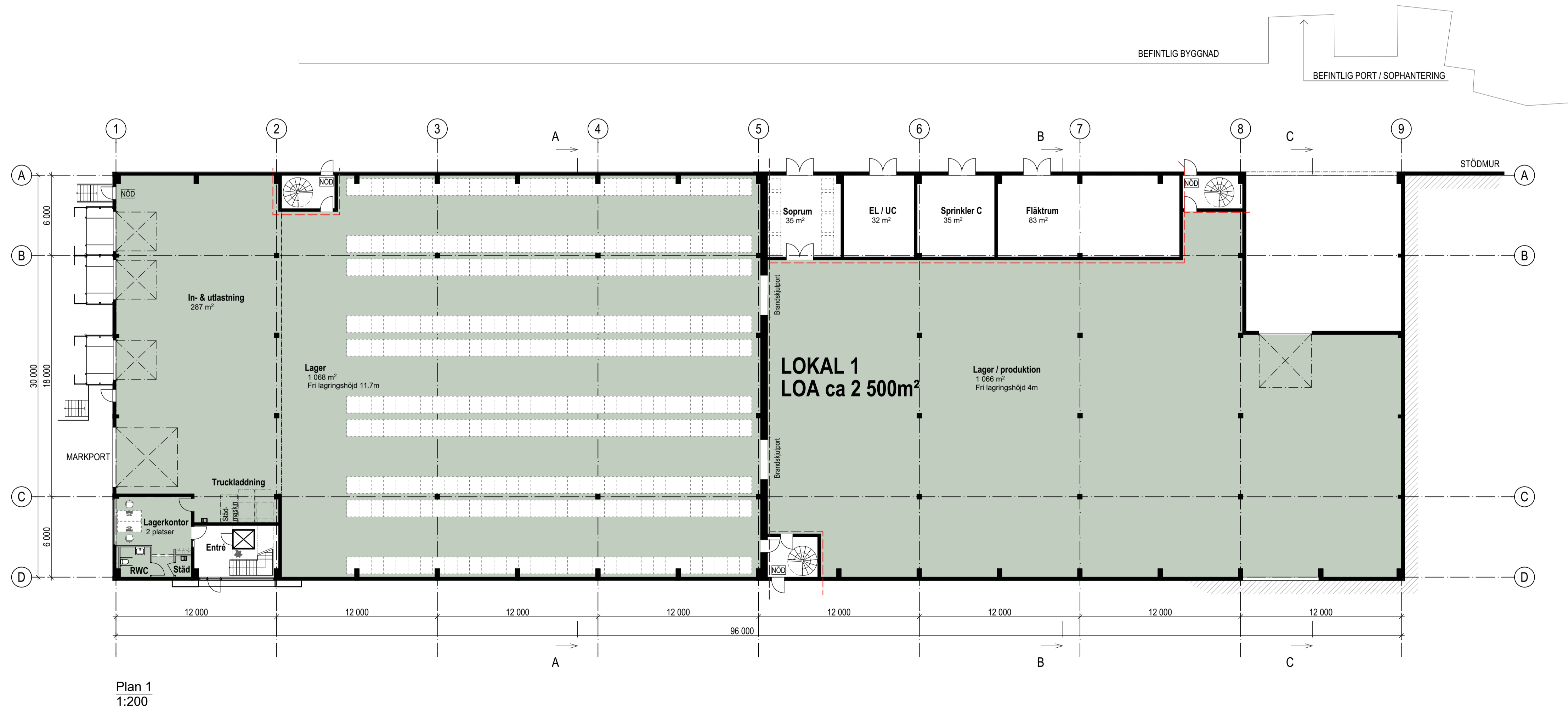
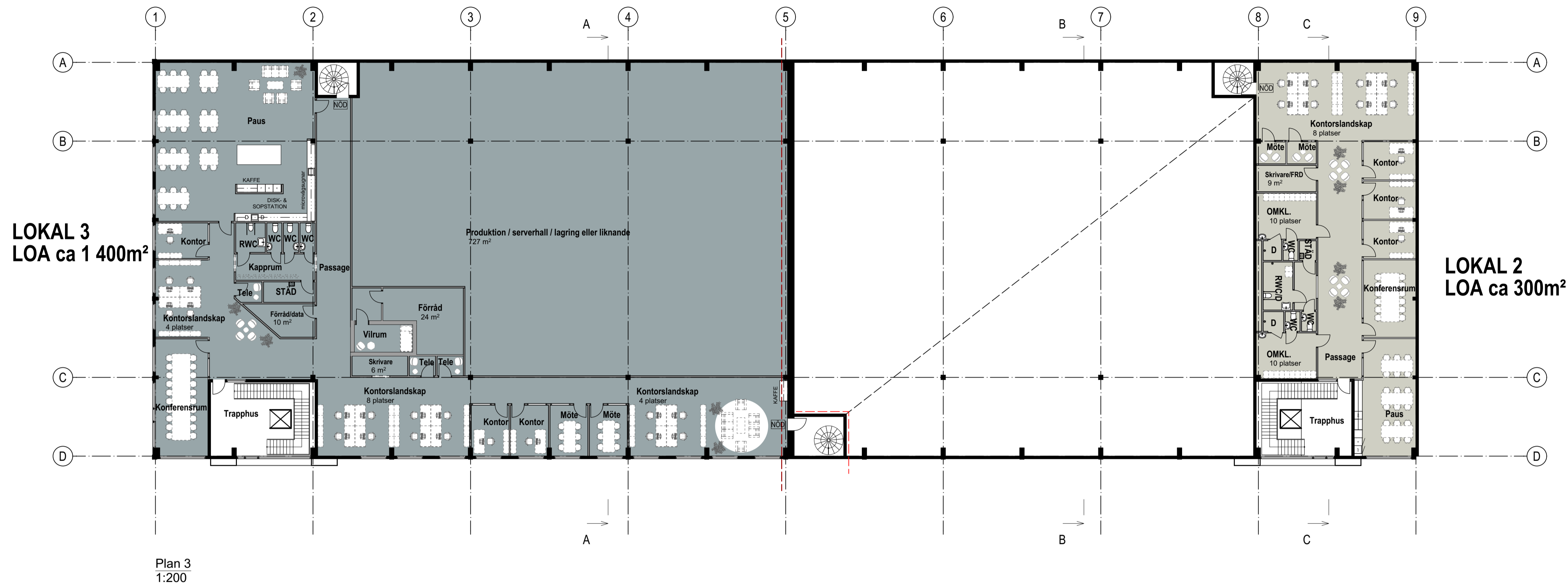


YTSAMMANSTÄLLNING

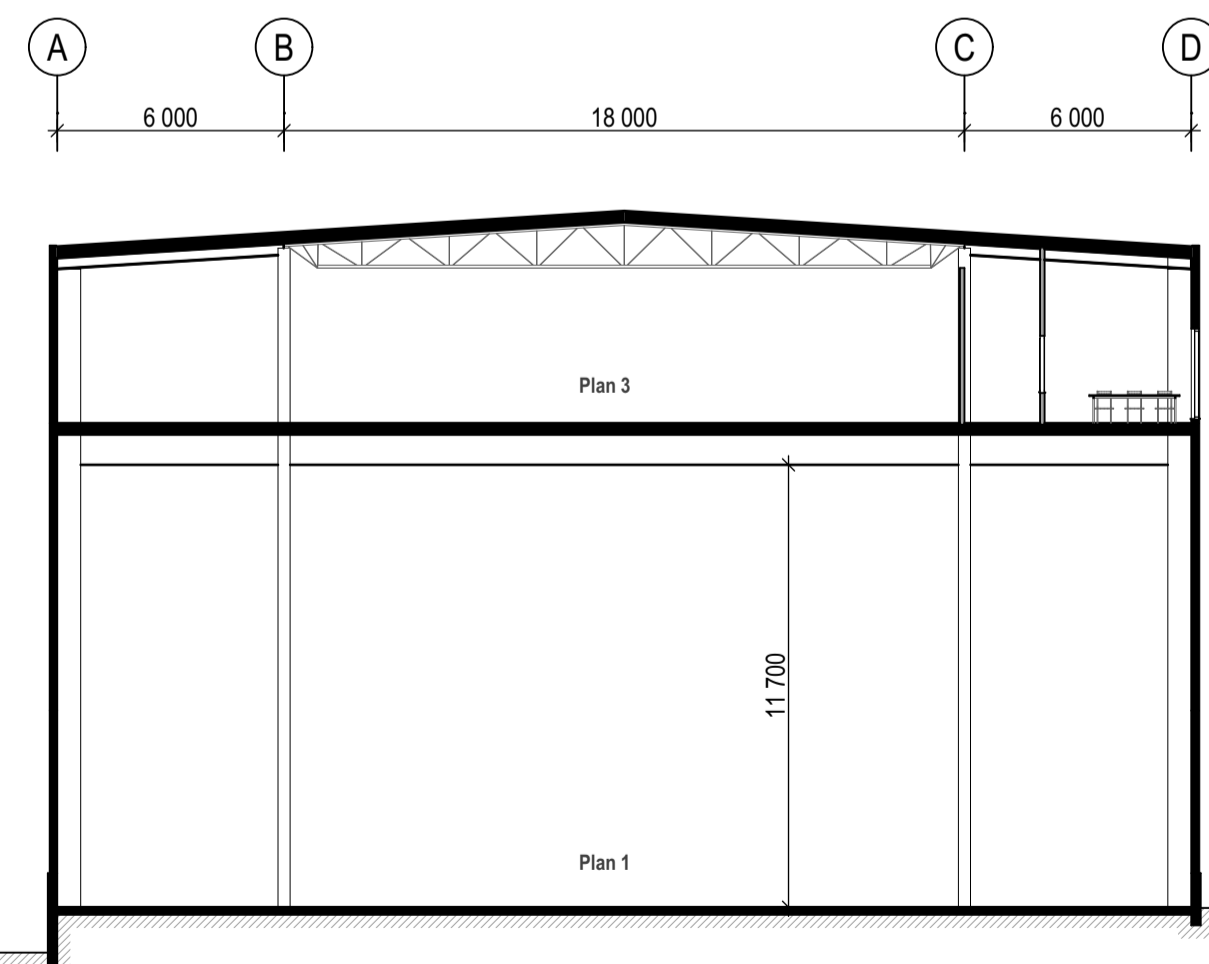
	LOKAL 1 BV = 2 500m ² P2 = 300m ² Totalt = 2 800m ²
	LOKAL 2 P2 = 1 400m ² P3 = 300m ² Totalt = 1 700m ²
	LOKAL 3 P3 = 1 400m ²



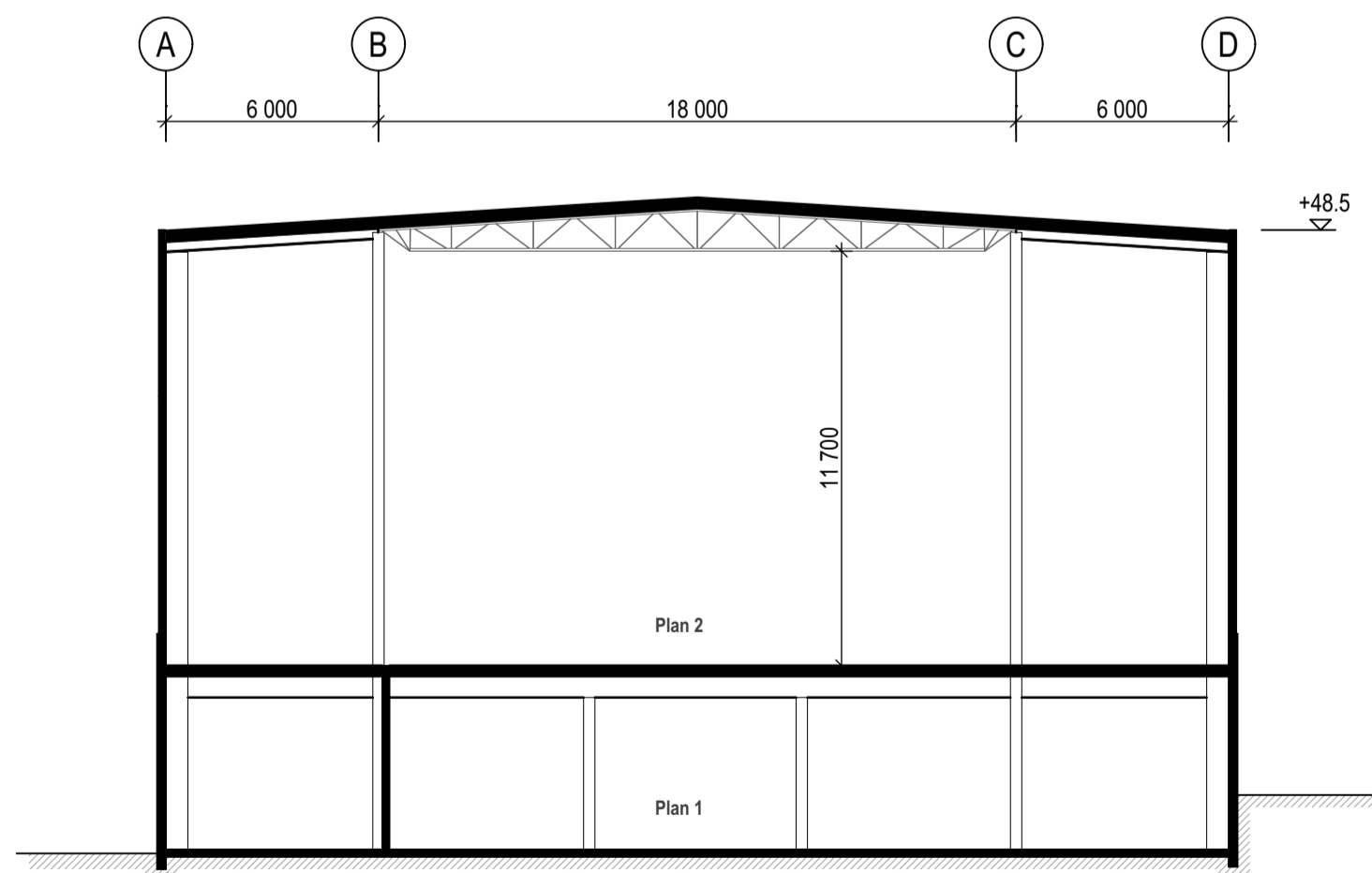


YTSAMMANSTÄLLNING

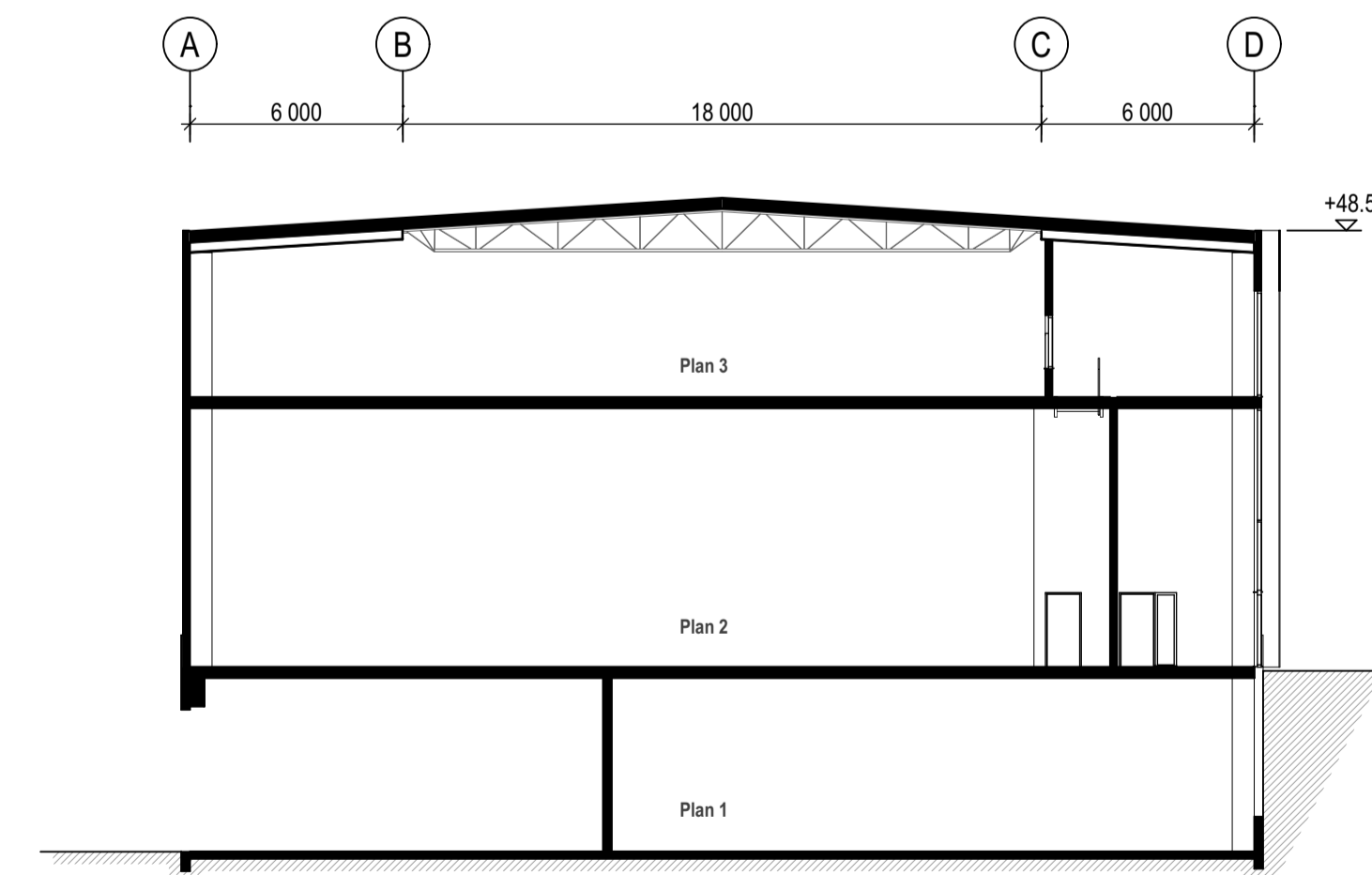
	LOKAL 1 BV = 2 500m ² P2 = 300m ² Totalt = 2 800m ²
	LOKAL 2 P2 = 1 400m ² P3 = 300m ² Totalt = 1 700m ²
	LOKAL 3 P3 = 1 400m ²



Sektion A
1:200



Sektion B
1:200



Sektion C
1:200

